

WELCOME
Matrix Concept
Visit To IBS Factory
IBS Superstructure In Malaysia 3 in 1
- 29-8-2016 -

**Industrialised Building System (IBS)
is a system not a machine or component.**

**Open System and Proprietary System
is a Technology.**

Factory Location :

<https://www.google.com/maps/place/HC+Precast/@3.5023546,101.6234678,21z/data=!4m5!3m4!1s0x0:0x83b5d2a1afa0368b!8m2!3d3.502373!4d101.623476>

Presentation at Show Unit : IBS Sequence of Work



Training Unit (Without Waterproofing , Roof Covering & Finishing – 9 Years)



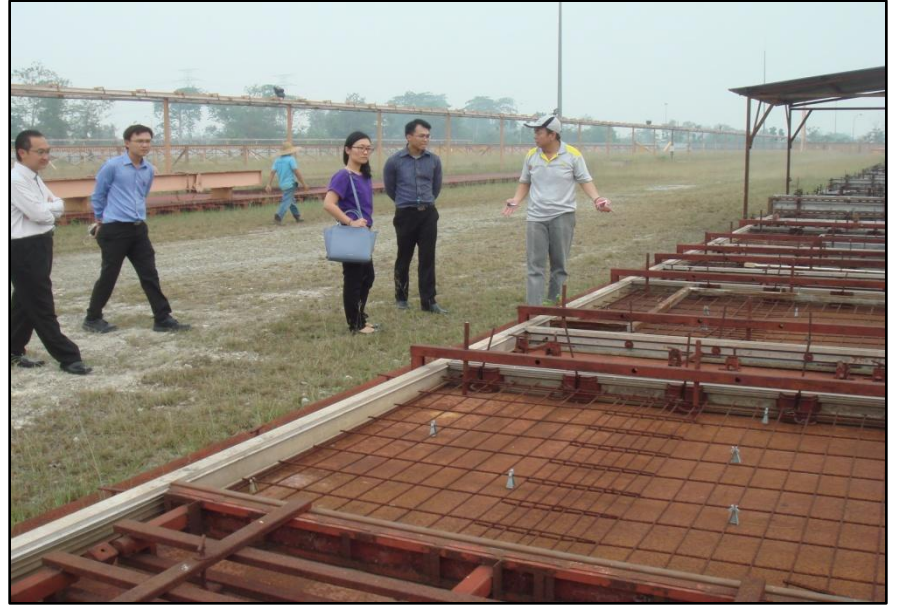
Training Unit (Without Waterproofing , Roof Covering & Finishing – 9 Years)



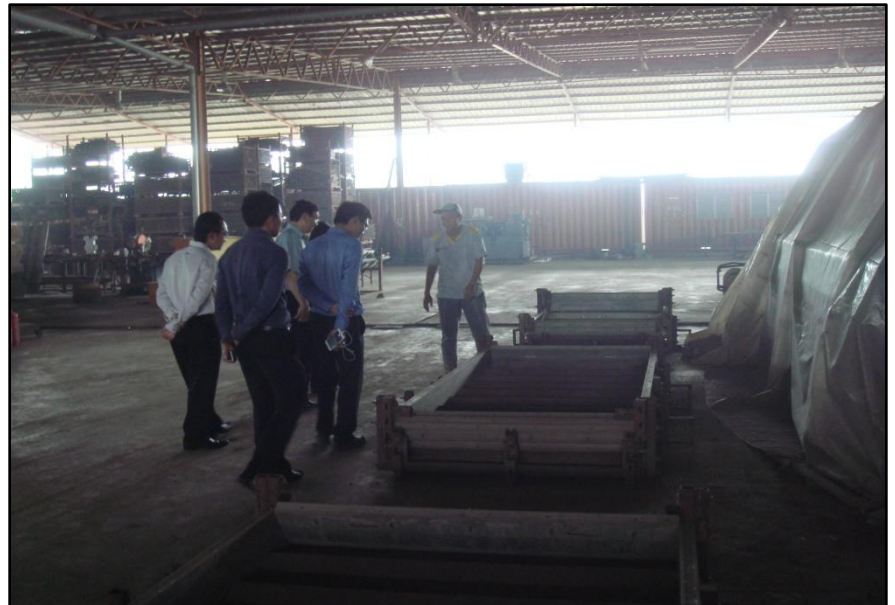
Training Unit (Without Waterproofing , Roof Covering & Finishing – 9 Years)



Production Sequence



In-house Engineering & Accessories Fabrication



SPEED : Decide by Client : Production , Delivery & Installation



**Future development 13 acres : 2,500 to 3,500 units
of single storey (1000 ft²) per year**

**Existing production 8 acres : 1,800 to 2,500 units
of single storey (1000 ft²) per year**

Quality Control & Assurance



External transport to project



G30 design mixed 14 hrs hoist



Panel 18 hrs hoist



Bay yard storage 7 days



DESIGN BY YOU
PRODUCE BY HC
THANK YOU